

Springridge Wallan

Saba 310

\$709,200

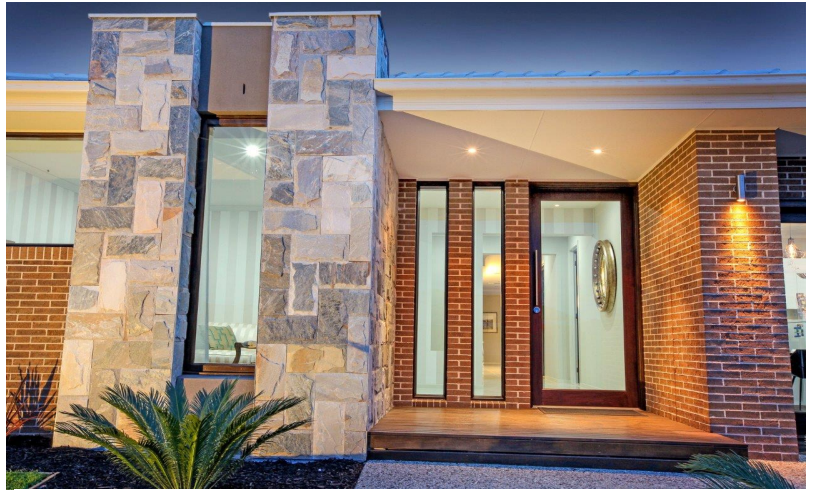
4



2



2

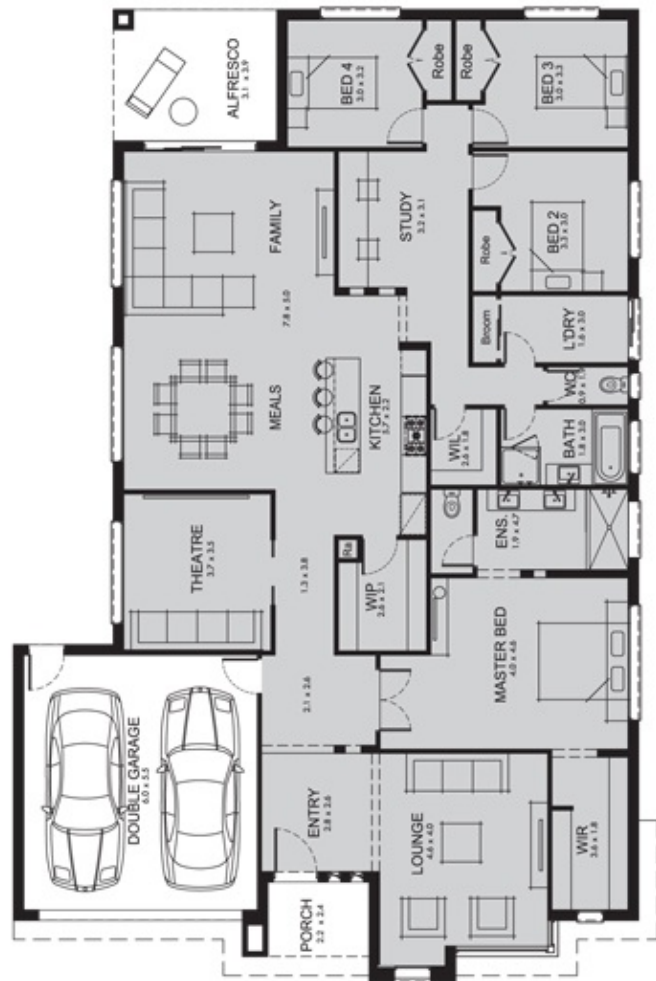


Lot 590 Springridge Wallan

Land size: 1250 sqm

Mimosa Homes Proudly Present

- Mimosa Homes Added Value Includes:
- Inclusive of site costs & connections with H1 class slab as per standard inclusions!
- Quality floor coverings throughout home!
- Range of facades including feature render!
- 3 Coat paint system!
- Higher ceilings - 2550mm!
- Flyscreens & window locks!
- Colorbond fascia, gutter & downpipes!
- Feature front door with Tri-lock door handle!
- Remote control panelift garage door!
- Downlights to living areas!
- Stone bench top to kitchen!
- 900mm Upright oven and cook top with canopy rangehood!
- Stainless steel Dishwasher and Microwave!
- Overhead cupboards & wine rack!
- Designer tap ware & basins!
- Six star energy with solar hot water!
- Flexible floor plans & so much more!
- Experience The Mimosa Homes Difference!



Contact: Haris Mujkanovic

0422 095 990

haris@mimosahomes.com.au

www.mimosahomes.com.au



Land availability and pricing is subject to the development availability. Mimosa Homes reserves the right to amend specifications and price without notice. All plans and facades are indicative concepts only; and are not intended to be accurate depictions of the building, fencing, paths, driveways or landscaping and are not necessarily to scale all dimensions are approximate (refer to working drawings). Package prices are based on standard facades and standard inclusions.