



# BENTLEY HOMES



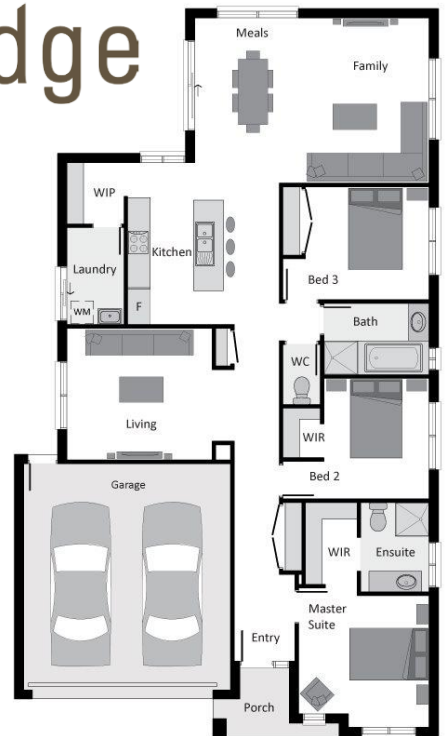
Award Winning Homes



## Brampton 200 - Lot 93 | Basil Drive, Wallan (691 m<sup>2</sup>)

Only **\$584,121** **springridge**

- Fixed Site Costs **INCLUSIVE** of Rock Removal
- Included Sarin façade Upgrade
- 6-star energy rating \* in any orientation
- Colorbond panel lift garage door with remote control system
- Estate Covenants, Guidelines & Statutory Costs
- Coloured Concrete Driveway
- Internal access door from garage to house
- 2590mm ceilings
- Brickwork over front windows & entry frame
- Complete flooring including timber laminate floorboards and quality carpet
- Undercover Alfresco included
- 20mm stone benchtops to kitchen, bathroom, ensuite
- 900mm stainless steel upright cooker and rangehood
- Overhead cabinetry to refrigerator space
- Large walk-in-pantry with melamine shelves & blade supports
- Practical joinery-built laundry fitout including laminate benchtop and 900mm under bench cabinetry
- Multifunction stainless steel dishwasher
- Shadowline to benchtops & double bank large pot drawers
- Flyscreen and window locks to openable windows



**Anna Craig – Sales Consultant**  
M: 0419 332 934