



Springridge Estate  
Lot 916, Abbi Place, Wallan

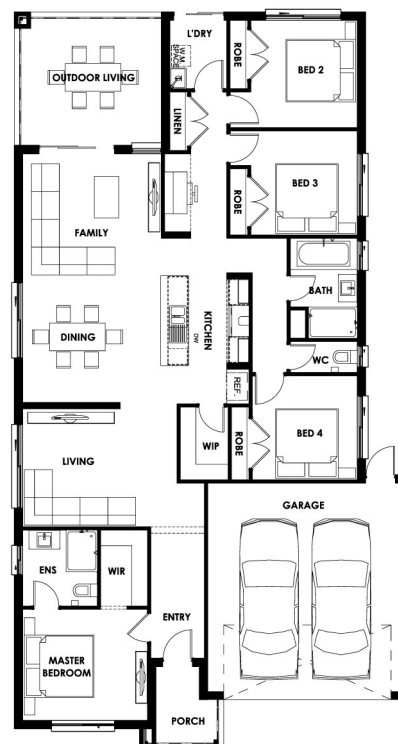
\$549,000

Ashford 23  
Marlo facade



#### PACKAGE INCLUSIONS:

- ✓ Site cost allowance
- ✓ 20 mm stone with 40 mm square edge to all benchtops
- ✓ 1000mm wide kitchen island benchtop
- ✓ Soft close to all cabinet drawers & doors
- ✓ Category 1 Timber Laminate Flooring
- ✓ Laminate Cabinetry
- ✓ Acrylic Bath
- ✓ RACV Emergency Home Assist for 12 months



For all enquiries contact: Rajan Gauba on 0488 004 033  
rgauba@kingsbridge.com.au

**kingsbridge.com.au**  
**1800 897 876**

\*Please refer to the Sales Consultant for floorplans and further product details. Package current as at 11/08/2021. Package price based on standard floorplan, builder's nominated façade and builder's preferred siting. All house and land packages are subject to developer's final approval. \*\$10,000 First Home Owner Grant already been deducted from the price. A second Regional Grant of \$10,000 may be applicable. Any non-standard requirements of the Developer and any other authority will be an additional cost to the Package Price. Land prices and availability are subject to change without notice. Package price listed includes site costs allowance of class M concrete waffle slab with up to 300mm of fall over the building area of a maximum of 450m² and 6 metre setback. Package price does not include government charges (ie. stamp duty) and legal costs. Plans are exclusively owned by Kingsbridge Homes and shall not be copied, distributed or altered, without the written permission of Kingsbridge Homes. Kingsbridge Homes reserves the right to change package details, prices or substitute the make, model and/or type of any of the above products, specifications, inclusions or promotion without notice or obligation. Images are for illustrative purposes only and may not represent standard inclusions. Please refer to final contract documents and final working drawings for exact details. E&OE. Kingsbridge Homes. This plan and information is indicative only and may vary without notice. Furniture or vehicles are not included in the sale of the lot. The image depicted here is a completed 'like design', not the actual lot for sale. Façade finishes and colours may vary. Images are artist's impressions only.