

## Soho 26 - Vive X

4 2 2 26 sq

Facade name: Soho

### House Plan:

### LOT #902

Springridge

Address: Petal Crescent, Wallan, 3756



407 m<sup>2</sup>

House and land package price:

From **\$680,000\***

### About package:

Package Includes:

- Engineer designed 'M' class waffle slab with up to 300mm cut & fill
- 6-star energy rating
- Choice of facades
- 2590mm ceiling height throughout
- Remote control to the garage
- Timber laminate flooring to Entry, Kitchen, Family and Dining
- Carpet to the remaining areas
- 20mm reconstituted stone to benchtop to Kitchen & Ensuite
- 900mm stainless steel kitchen appliances
- 600mm stainless steel dishwasher
- Overhead cupboards with plaster bulkhead to kitchen
- Soft closing cabinetry mechanisms
- 2000mm high shower screens throughout
- Framed mirrored sliding robe doors
- Ducted heating throughout
- Custom builder with Flexible Floor Plans



### ENQUIRE NOW:

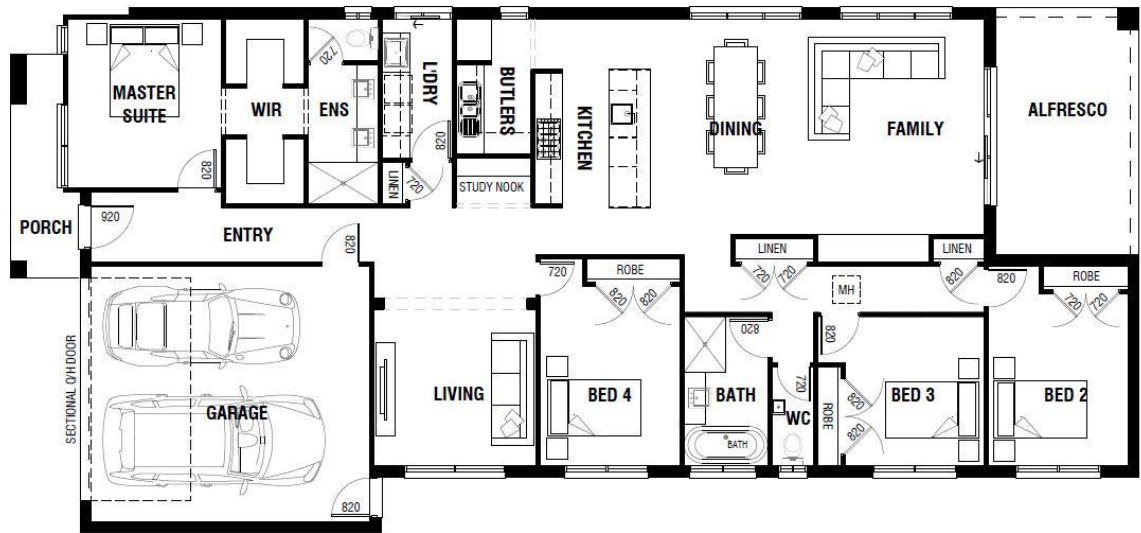
Bradley Azzopardi • P: 0431 452 164 • E: [bradley@vivehomes.com.au](mailto:bradley@vivehomes.com.au)

Images depicted on this site are for illustration purposes only. Facades and other images of homes and land estates may include optional upgrades, additional fixtures, finishes and home or estate features that are not included in the base price of the home or land package such as landscaping, feature tiling, decking, furnishing, feature lighting, pools, etc. Land estate pricing and plans are subject to developer guidelines and may vary at any time.



**Estate Features:**

- ✓ Wallan Primary School
- ✓ Wellington Square Shopping Centre
- ✓ Wallan Station



**ENQUIRE NOW:**

Bradley Azzopardi • P: 0431 452 164 • E: [bradley@vivehomes.com.au](mailto:bradley@vivehomes.com.au)

Images depicted on this site are for illustration purposes only. Facades and other images of homes and land estates may include optional upgrades, additional fixtures, finishes and home or estate features that are not included in the base price of the home or land package such as landscaping, feature tiling, decking, furnishing, feature lighting, pools, etc. Land estate pricing and plans are subject to developer guidelines and may vary at any time.